

T estpassport考試指南



品 質 更 高 服 務 更 好

一年免費更新服務

<http://www.testpassport.net>

Exam : **70-316**

Title : Developing and
Implementing
Windows-based
Applications with Microsoft
Visual C# .NET

Version : DEMO

1. You develop a kiosk application that enables users to register for an e-mail account in your domain. Your application contains two TextBox controls named `textName` and `textEmail`. Your application is designed to supply the value of `textEmail` automatically. When a user enters a name in `textName`, an e-mail address is automatically assigned and entered in `textEmail`. The `ReadOnly` property of `textEmail` is set to `True`. Your database will store each user's name. It can hold a maximum of 100 characters for each name. However, the database can hold a maximum of only 34 characters for each e-mail address. This limitation allows 14 characters for your domain, `@proseware.com`, and 20 additional characters for the user's name. If a user enters a name longer than 20 characters, the resulting e-mail address will contain more characters than the database allows. You cannot make any changes to the database schema. You enter the following code in the `Leave` event handler of `textName`: `textEmail.Text = textName.Replace(".", ".") + "@proseware.com"`; Now you must ensure that the automatic e-mail address is no longer than 34 characters. You want to accomplish this goal by writing the minimum amount of code and without affecting other fields in the database. What should you do?

- A. Set the `textName.Size` property to "1,20".
 - B. Set the `textEmail.Size` property to "1,34".
 - C. Set the `textName.AutoSize` property to `True`.
 - D. Set the `textEmail.AutoSize` property to `True`.
 - E. Set the `textName.MaxLength` property to 20.
 - F. Set the `textEmail.MaxLength` property to 34.
 - G. Change the code in `textName_Leave` to ensure that only the first 20 characters of `textName.Text` are used.
 - H. Use an `ErrorProvider` control to prompt a revision if a user enters a name longer than 20 characters.
- Answer: G

2. You use Visual Studio .NET to create a Windows-based application. The application includes a form named `Shipments`. You implement print functionality in `Shipments` by using the native .NET System Class Libraries. `Shipments` will print a packing list on tractor-fed preprinted forms. The packing list always consists of two pages. The bottom margin of page 2 is different from the bottom margin of page 1. You must ensure that each page is printed within the appropriate margins. What should you do?

- A. When printing page 2, set the bottom margin by using the `PrintPageEventArgs` object.
- B. When printing page 2, set the bottom margin by using the `QueryPageSettingsEventArgs` object.
- C. Before printing, set the bottom margin of page 2 by using the `PrintSetupDialog` object.
- D. Before printing, set the bottom margin of page 2 by using the `PrinterSettings` object.

Answer: A

3. You use Visual Studio .NET to create a Windows-based application. You need to make the application accessible to users who have low vision. These users navigate the interface by using a screen reader, which translates information about the controls on the screen into spoken words. The screen reader must be able to identify which control currently has focus. One of the TextBox controls in your application enables users to enter their names. You must ensure that the screen reader identifies this TextBox control by speaking the word "name" when a user changes focus to this control. Which property of this control should you configure?

- A. Tag
- B. Text
- C. Name
- D. AccessibleName
- E. AccessibleRole

Answer: D

4. You use Visual Studio .NET to develop a Windows-based application that interacts with a Microsoft SQL Server database. Your application contains a form named CustomerForm, which includes the following design-time components: SqlConnection object named NorthwindConnection SqlDataAdapter object named NorthwindDataAdapter DataSet object named NorthwindDataSet, based on a database table named Customers At run time you add a TextBox control named textCompanyName to CustomerForm. You execute the Fill method of NorthwindDataAdapter to populate Customers. Now you want to use data binding to display the CompanyName field exposed by NorthwindDataSet in textCompanyName. Which code segment should you use?

- A. `textCompanyName.DataBindings.Add("Text", NorthwindDataSet, "CompanyName");`
- B. `textCompanyName.DataBindings.Add("Text", NorthwindDataSet, "Customers.CompanyName");`
- C. `textCompanyName.DataBindings.Add("Text", NorthwindDataAdapter, "CompanyName");`
- D. `textCompanyName.DataBindings.Add("Text", NorthwindDataAdapter, "Customers.CompanyName");`

Answer: B

5. You develop a Windows-based application that includes several menus. Every top-level menu contains several menu items, and certain menus contain items that are mutually exclusive. You decide to distinguish the single most important item in each menu by changing its caption text to bold type. What should you do?

- A. Set the DefaultItem property to True.

B. Set the Text property to "True".

C. Set the Checked property to True.

D. Set the OwnerDraw property to True.

Answer: A

6. You develop a Visual Studio .NET application that dynamically adds controls to its form at run time. You include the following statement at the top of your file: `using System.Windows.Forms;` In addition, you create the following code to add Button controls: `Button tempButton = new Button(); tempButton.Text = NewButtonCaption; tempButton.Name = NewButtonName; tempButton.Left = NewButtonLeft; tempButton.Top = NewButtonTop; this.Controls.Add(tempButton); tempButton.Click += new EventHandler(ButtonHandler);` Variables are passed into the routine to supply values for the Text, Name, Left, and Top properties. When you compile this code, you receive an error message indicating that ButtonHandler is not declared. You need to add a ButtonHandler routine to handle the Click event for all dynamically added Button controls. Which declaration should you use for ButtonHandler?

A. `public void ButtonHandler()`

B. `public void ButtonHandler(System.Windows.Forms.Button sender)`

C. `public void ButtonHandler(System.Object sender)`

D. `public void ButtonHandler(System.Windows.Forms.Button sender, System.EventArgs e)`

E. `public void ButtonHandler(System.Object sender, System.EventArgs e)`

Answer: E

7. Another developer creates data files by using a computer that runs a version of Microsoft Windows XP Professional distributed in France. These files contain financial transaction information, including dates, times, and monetary values. The data is stored in a culture-specific format. You develop an application that uses these data files. You must ensure that your application correctly interprets all the data, regardless of the Culture setting of the client operating system. Which code segment should you add to your application?

A. `using System.Threading; using System.Data; Thread.CurrentThread.CurrentCulture = new CultureInfo("fr-FR");`

B. `using System.Threading; using System.Data; Thread.CurrentThread.CurrentCulture = new TextInfo("fr-FR");`

C. `using System.Threading; using System.Globalization; Thread.CurrentThread.CurrentCulture = new CultureInfo("fr-FR");`

D. using System.Threading;using System.Globalization;Thread.CurrentThread.CurrentCulture =new TextInfo("fr-FR");

Answer: C

8. You develop a Windows-based application that enables users to enter product sales. You add a subroutine named CalculateTax. You discover that CalculateTax sometimes raises an IOException during execution. To address this problem, you create

two additional subroutines named LogError and CleanUp. These subroutines are governed by the following rules: LogError must be called only when CalculateTax raises an exception. CleanUp must be called whenever CalculateTax is complete. You must ensure that your application adheres to these rules. Which code segment should you use?

A. try { CalculateTax(); LogError(); } catch (Exception e) { CleanUp(e); }

B. try { CalculateTax(); } catch (Exception e) { LogError(e); CleanUp(); }

C. try { CalculateTax(); } catch (Exception e) { LogError(e); } finally { CleanUp(); }

D. try { CalculateTax(); } catch (Exception e) { CleanUp(e);

} finally { LogError(); }

Answer: C

9. You develop a Windows Form that provides online help for users. You want the help functionality to be available when users press the F1 key. Help text will be displayed in a pop-up window for the text box that has focus. To implement this functionality, you need to call a method of the HelpProvider control and pass the text box and the help text. Which method should you call?

A. SetShowHelp

B. SetHelpString

C. SetHelpKeyword

D. ToString

Answer: B

10. You develop an application that includes a Contact class. The Contact class is defined by the following code:

```
public class Contact {
    private string name;
    public event EventHandler ContactSaved;

    public string Name {
        get {return name;}
        set {name = value;}
    }

    public void Save() {
        // Insert Save code.
        // Now raise the event.
        OnSave();
    }

    public virtual void OnSave() {
        // Raise the event:
        if (ContactSaved != null) {
            ContactSaved(this, null);
        }
    }
}
```

You create a form named MainForm. This form must include code to handle the ContactSaved event raised by the Contact object. The Contact object will be initialized by a procedure named CreateContact. Which code segment should you use?

- A.

```
private void HandleContactSaved() {
    // Insert event handling code.
}

private void CreateContact() {
    Contact oContact = new Contact();
    oContact.ContactSaved +=
        new EventHandler(HandleContactSaved);
    oContact.Name = "Bruce";
    oContact.Save();
}
```
- B.

```
private void HandleContactSaved(
    object sender, EventArgs e) {
    // Insert event handling code.
}

private void CreateContact() {
    Contact oContact = new Contact();
    oContact.Name = "Bruce";
    oContact.Save();
}
```


- C.

```
private void HandleContactSaved(
    object sender, EventArgs e) {
    // Insert event handling code.
}

private void CreateContact() {
    Contact oContact = new Contact();
    oContact.ContactSaved +=
        new EventHandler(HandleContactSaved);
    oContact.Name = "Bruce";
    oContact.Save();
}
```
- D.

```
private void HandleContactSaved(object sender,
    EventArgs e) {
    // Insert event-handling code.
}

private void CreateContact() {
    Contact oContact = new Contact();
    new EventHandler(HandleContactSaved);
    oContact.Name = "Bruce";
    oContact.Save();
}
```

A. A

B. B

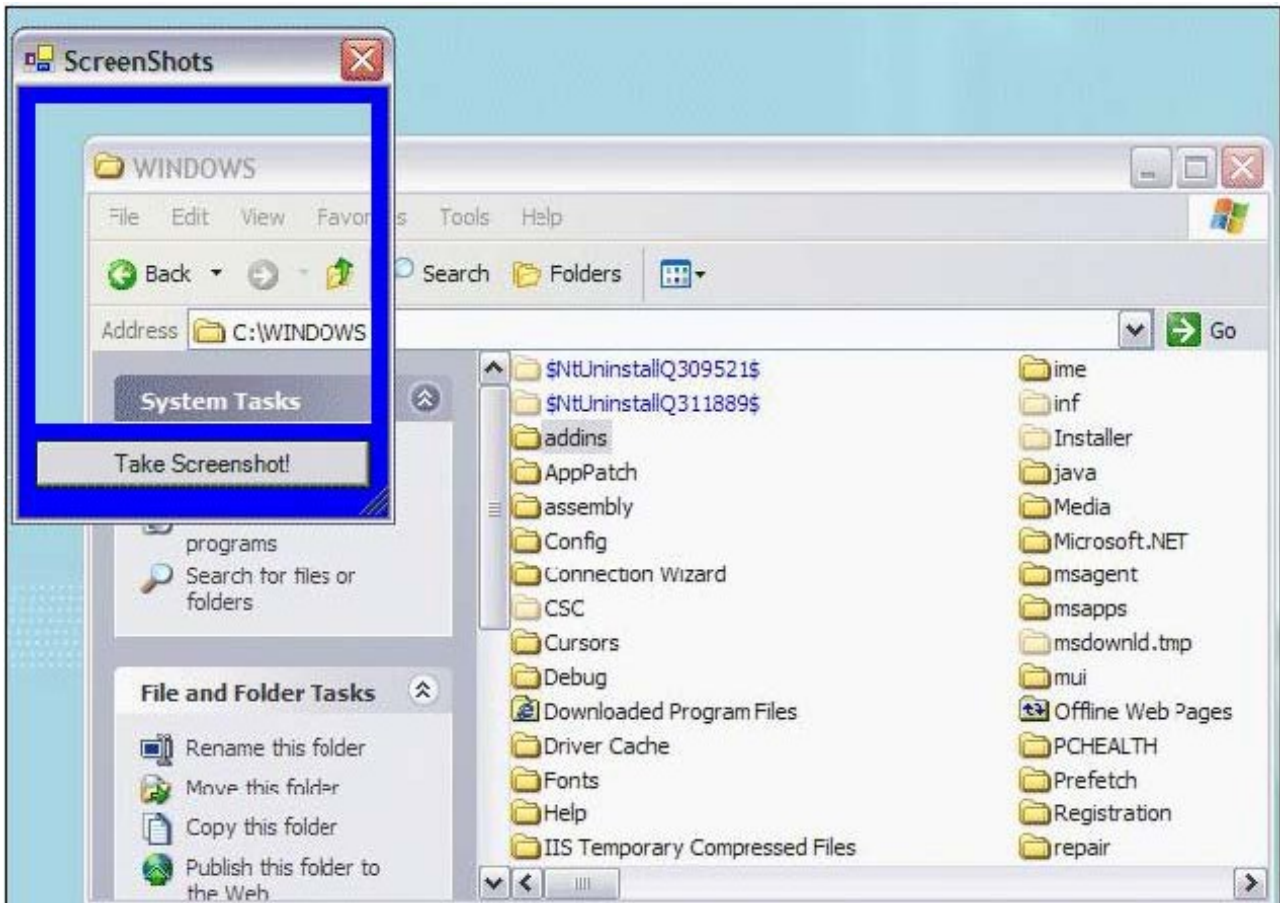
C. C

D. D

Answer: C

11. You use Visual Studio .NET to create a Windows-based application. The application captures screen shots of a small portion of the visible screen. You create a form named CameraForm. You set the CameraForm.BackColor property to Blue. You create a button on the form to enable users to take a screen shot. Now you need to create a transparent portion of CameraForm to frame a small portion of the screen. Your application will capture an image of the screen inside the transparent area. The resulting appearance of CameraForm is shown in the exhibit. (Click the Exhibit button.) You add a Panel control to CameraForm and name it transparentPanel. You must ensure that any underlying applications will be visible within the panel.

Which two actions should you take? (Each correct Answer presents part of the solution. Choose two.)



- A. Set transparentPanel.BackColor to Red.
- B. Set transparentPanel.BackColor to Blue.
- C. Set transparentPanel.BackgroundImage to None.
- D. Set transparentPanel.Visible to False.
- E. Set CameraForm.Opacity to 0%.
- F. Set CameraForm.TransparencyKey to Red.
- G. Set CameraForm.TransparencyKey to Blue.

Answer: AF

12. You use Visual Studio .NET to develop a Windows-based application. Your application will display customer order information from a Microsoft SQL Server database. The orders will be displayed on a Windows Form that includes a DataGrid control named DataGrid1. DataGrid1 is bound to a DataView object. Users will be able to edit order information directly in DataGrid1. You must give users the option of displaying only edited customer orders and updated values in DataGrid1. What should you do?

- A. Set the RowStateFilter property of the DataView object to DataViewRowState.ModifiedOriginal.

B. Set the RowStateFilter property of the DataView object to DataViewRowState.ModifiedCurrent.

C. Set the RowFilter property of the DataView object to DataViewRowState.ModifiedOriginal.

D. Set the RowFilter property of the DataView object to DataViewRowState.ModifiedCurrent.

Answer: B

13. You use Visual Studio .NET to create a Windows-based application. The main form of the application contains several check boxes that correspond to application settings. One of the CheckBox controls is named advancedCheckBox. The caption for advancedCheckBox is Advanced. You must enable users to select or clear this check box by pressing ALT+A. Which two actions should you take? (Each correct Answer presents part of the solution. Choose two.)

A. Set advancedCheckBox.AutoCheck to True.

B. Set advancedCheckBox.AutoCheck to False.

C. Set advancedCheckBox.Text to "&Advanced".

D. Set advancedCheckBox.Tag to "&Advanced".

E. Set advancedCheckBox.CheckState to Unchecked.

F. Set advancedCheckBox.CheckState to Indeterminate.

G. Set advancedCheckBox.Appearance to Button.

H. Set advancedCheckBox.Appearance to Normal.

Answer: AC

14. You use Visual Studio .NET to create a Windows-based application. The application includes a form that contains several controls, including a button named exitButton. After you finish designing the form, you select all controls and then select Lock Controls from the Format menu. Later, you discover that exitButton is too small. You need to enlarge its vertical dimension with the least possible effort, and without disrupting the other controls. First you select exitButton in the Windows Forms Designer. What should you do next?

A. Set the Locked property to False. Set the Size property to the required size. Set the Locked property to True.

B. Set the Locked property to False. Use the mouse to resize the control. Set the Locked property to True.

C. Set the Size property to the required size.

D. Use the mouse to resize the control.

Answer: C

15. Your company uses Visual Studio .NET to create a Windows-based application for a hospital. The application is named PatientTracker, and it calls an assembly named Schedule. Six months pass. The hospital asks your company to develop a new Windows-based application. The new application will be named PhysicianTracker, and it will also call Schedule. Because you anticipate future revisions to this assembly, you want only one copy of Schedule to serve both applications. Before you can use Schedule in PhysicianTracker, you need to complete some preliminary tasks. Which three actions should you take? (Each correct

Answer presents part of the solution. Choose three.)

- A. Create a strong name for Schedule.
- B. Use side-by-side execution to run Schedule.
- C. Install Schedule in the global assembly cache.
- D. Move Schedule to the Windows\System32 folder.
- E. Create a reference in PhysicianTracker to Schedule.
- F. Create a reference in PhysicianTracker to PatientTracker.

Answer: ACE

16. You use Visual Studio .NET to create several applications that will be deployed commercially over the Internet. You must ensure that customers can verify the authenticity of your software.

Which action or actions should you take? (Choose all that apply.)

- A. Sign your portable executables by using Signcode.exe.
- B. Generate an X.509 certificate by using Makecert.exe.
- C. Purchase an X.509 certificate from a certificate authority.
- D. Purchase a Software Publisher Certificate from a certificate authority.
- E. Convert your certificate to a Software Publisher Certificate by using Cert2spc.exe.

Answer: AD

17. You use Visual Studio .NET to create a component that will be shared by two client applications. Eventually, you plan to deploy new versions of this shared component. However, not all of the new versions will be compatible with both client applications. When you deploy the shared component and the client applications, you must ensure that you can upgrade the shared component for a single client application. You must also minimize the need for configuration changes when you deploy new versions of the component. What are two possible ways to achieve your goal? (Each correct

Answer presents a complete solution. Choose two.)

A. Deploy each client application to its own folder.

Deploy the shared component to its own folder. Register the shared component by using RegSvr32 with the /s option.

B. Deploy each client application to its own folder. Deploy a separate copy of the shared component to each client application folder. When you deploy a new version of the component, replace the older version only if the new version remains compatible with the client application in the same folder.

C. Compile the client applications with references to the shared component. Deploy both client applications and the shared component to a single folder. When you deploy a new version of the component, increment its version number.

D. Create a strong name for the shared component and specify a version number. Compile each client application and bind it to the shared component. Deploy the shared component to the global assembly cache on the client computer. Deploy each client application to its own folder. When you deploy a new version of the component, increment its version number.

Answer: BD

18. You use Visual Studio .NET to create an application that will be deployed to several client computers. You plan to use the Visual Studio .NET Setup Wizard to create a setup package to distribute your application. Because of licensing restrictions, you must ensure that the setup package can be installed only on computers that have a particular registry key. What should you do?

A. Add a registry key to the setup project. Set the Transitive property of your key to True.

B. From the Properties window, set the private key file option to the registry key.

C. From the Launch Conditions window, add a search for the registry key. Add a launch condition to evaluate the search results.

D. Add a project-specific installer component to your application, and write code that searches for the required registry key. Cancel the setup if the registry key does not exist on the client computer.

Answer: C

19. You use Visual Studio .NET to create an application for 100 users in your customer support department. The users run a variety of operating systems on a variety of hardware. You plan to create a distribution package for your

application. Your application includes several Windows Forms with many controls on each. You must ensure that the Windows Forms will launch as quickly as possible on client computers. You must not adversely affect the functionality of the application. What should you do?

A. Set the Compression property of the setup project to Optimized for Speed. Then build your distribution package.

- B. For each Windows Form in your application, set the CausesValidation property to False.
- C. Use the Native Image Generator (Ngen.exe) to precompile your application. Add the precompiled application to your distribution package.
- D. Add a custom action to your setup project to precompile your application during installation.

Answer: D

20. You develop a Windows-based inventory application. The application will use a SqlDataAdapter object, a SqlCommandBuilder object, and a DataSet object to retrieve data from and manage updates to a Microsoft SQL Server database. You write the following code to set up the objects:SqlConnection cn = new SqlConnection("server=CONTOSO;database=Inventory"); DataSet ds = new DataSet(); SqlDataAdapter da = new SqlDataAdapter("SELECT ProductDescription, UnitPrice FROM Products", cn); SqlCommandBuilder cb = new SqlCommandBuilder(da); When you test the application, you can successfully retrieve data from the DataSet object. However, when you try to send modified data back to the database, your changes are not saved.

How should you correct this problem?

- A. Specify a SelectCommand property for the SqlDataAdapter object.
- B. Specify an UpdateCommand property for the SqlDataAdapter object.
- C. Include the primary key field of the Products table in the SELECT query.
- D. Include a WHERE clause in the SELECT query.

Answer: C

This document was created with Win2PDF available at <http://www.win2pdf.com>.
The unregistered version of Win2PDF is for evaluation or non-commercial use only.
This page will not be added after purchasing Win2PDF.